



# ALPINE SUN



Best Climate in US by Govt. Report.

VOL. 12, NO. 6 (285) ALPINE, CALIF. FRIDAY, MAR. 15, 1963 10¢

## Bank Open in May, Selects Manager

### TEACHER STROHTE QUILTS

Monday the school board accepted the resignation of Warren Strohte, president of Alpine Teachers' Ass'n, effective at school year's end. He gave no reason. He taught here six years.

M. Ross Mallette, 32, an administration executive in SD with Security First National Bank, has just been named manager of the new Alpine Branch, due to open the middle of May, the Sun learned yesterday from Carl E. Hartnack, senior

MORE ON PAGE 10



NEAR FATAL COLLISION WEDNESDAY IN FRONT OF FLORENCE'S MARKET PUT N.S. JASPER, 77, AND WIFE FLORENCE, 71, OF NATIONAL CITY, IN HOSPITAL WITH SERIOUS INJURIES. AMBULANCE IS LOADING HIM, BUT SHE HAD TO BE AIDED FROM UNDER DASH & WHEEL, AS NO SEATBELTS WERE WORN. THEY MADE U-TURN GOING EAST IN FRONT OF CAR DRIVEN EASTBOUND BY HARVEY RUST, SAILOR OF USS GUNSTON HALL, SD, WHO WAS NOT CITED, REPORTED CHP OFFICER J.J. BROWN. PHOTO BY FRAN HALL

### \$900 FOR BAND UNIFORMS

A maximum of 20 uniforms for the school band was okayed Monday at the board meeting. Cost will be about \$45 each. A lot of the money was raised by student efforts.

Clarke Irvine's Radio Program Sunbeams, on XEMO, will be on Sundays at 7:30 pm instead of 7 pm. Tune 860 and hear it.

The C.P. Vancils attended installation of officers of Veterans of WW1 and its auxiliary, in Fallbrook. Over 100 from nearby areas and other states, were present

1940 1962

## SOLIMINE'S

Famous For

### Italian Food

Charcoal Broiled Steaks

Open 7 Days A Week

8949 La Mesa Blvd. 469-0181

## EL CAJON THEATRE

444-3272

NOW THRU TUESDAY  
JACKIE GLEASON  
'GIGOT'  
JOHN WAYNE  
'COMMANCHEROS'

## AERO DRIVE-IN

BOSTONIA 444-8800

NOW THRU TUESDAY  
BETTE DAVIS  
JOAN CRAWFORD  
'WHAT EVER HAPPENED  
TO BABY JANE?'  
'THE MUSIC MAN'

swapmeet weekly, 9 to 5  
Sat. 35 & 50¢ per car  
Sun. 50¢ & \$1 per car

For Your Health Foods, Vitamins And Special Diets  
Purchase With Safety And Confidence At The

## VALLEY HEALTH FOOD STORE

IN BUSINESS SINCE 1950

W.L. HOUGHTON, OWNER

The address is still 133 Prescott, El Cajon, HI4-8447

## Plan Fast Draw Match

The first annual SD County Fast Draw Championship in cooperation with Rancho Santa Fe Marshal's Fast Draw club will be Sunday, March 24 from 10 on at Big Oak Ranch, Frontier Town. This is the first time this contest has been held here and champions from Nevada, Arizona and California will compete for 25 trophies and \$100. cash prizes offered by Frontier Town.

Mayor Robert Cornett of EC will be guest of honor and Eldon Carl, world's champion in live ammo will be present. Bob Munden who holds California's championship in blank shooting and many more fast guns will be there. Gate admission is 50¢ and includes swimming, picnic area, the shooting match and other shows planned by Mr. and Mrs. Jerry Campbell, owners of the fabulous ranch.

## STELLA DAVEY

Services were in SD Wednesday last week for Mrs. Stella S. Davey, 77, of 2514 Hwy 80, who died on the Sunday in a local rest home. Born in Dorsey, Nebr., she had lived in the county 22 years, the last several at Pine Log Court, which she managed. She leaves a son, Keith, in Las Vegas, Nev.

Best place to spend your vacation is just inside your income.

## Whitt Firm Continues

Jim Whitt and Al Wickens and the family have asked the Sun to convey their sincere thanks for the many expressions of sympathy during their recent bereavement. Alpine indeed lost a fine, civic-minded fellow when Ted Whitt was killed last week.

"Jim and I, with Mrs. Whitt, will carry on the business" Wickens told the Sun, "just as it has been conducted, and we plan on enlarging and improving our services".

They had recently finished blacktopping around the shop and office, top of Marshall Road, and due to increase in building around the back country, their business has also increased.

## BOYS MAKE HIGH SCORES

Parents of Bob Rowan and John Gilroy, studying in a Santa Barbara photography college, have made top grades, report the parents. Young Rowan placed 4th out of 30, with a 3.8, while John made a 4.0. Passing is 2.0.

## Pierce Realty Co

BILL BROWN, Mgr.

Ranches, Homes,  
Acreage, Income

445-2631 Eves. 445-3035

# Sensational Sale!!

Of Surplus Items

ACCUMULATED SINCE 1897

NEW - USED - OBSOLETE

Here are some of the items on sale at the rate of  
1¢ to \$1. of their original selling price:

Hardware, Machinery, Used Trucks, Carpenter --  
Electrical - Plumber tools and supplies. Wagon  
Wheels, electric and gas motors, nuts, bolts,-  
display cases, canvas. Trailers - washers, ---  
heaters and at least 5,000 other items.

**SAT. MAR. 16**

Gates Open 7:30 a.m.

**The HALL Co.**

(Formerly the W.D. Hall Co.)

230 E. Main

El Cajon

# EDITORIAL



## Collision Showed Urgency of for Seat Belts!

Wednesday's collision in downtown Alpine dramatically showed the necessity of all cars having seat belts, safety belts, as they used to be called. Fran Hall's photo on next page graphically backs up this.

### ALPINE SUN

America's Finest Newspaper

445-2415 OR 445-2394

2255 Tavern Rd. Mail Rt. 1, Box 189

ALPINE, SAN DIEGO COUNTY, CALIFORNIA

PUBLISHED SEMI-MONTHLY ON FRIDAY

10¢ PER COPY, BY MAIL, \$2. YEARLY

CLARKE IRVINE, EDITOR & PUBLISHER  
AOPA 194347

ALICE IRVINE, ART & COMPOSITION  
OWNED BY HEALTH DEFENSE LEAGUE INC.

PRINTED AND PRODUCED ENTIRELY ON THE RANCH

All paid. Second class mail privileges authorized at Alpine, California.

EST. JAN 1952. ADJUDGED FOR LEGAL ADS ON 11-12-59. IN SUPERIOR COURT, NO. 238120.



For over half an hour the woman, 71, was pinned under the wheel, thrown because she had no restraining belt. The husband fared worse-- he went right out of the car.

Police, insurance firms and the CHP have urged belts in all cars. But we are all lax, procrastinators and are too busy. Recently a woman was killed in an air crash at Agua Caliente because she could not wear the belt due to pregnancy. This well proved their value. Three others with belts in the plane were uninjured. And two Alpine men, recently killed in car accidents, might have been saved had they worn seat belts. -CI

### TO SEEK SHERIFF HERE

Wednesday night Alpine C of C decided to request Sheriff Joe O'Connor to give this area a resident officer, due to the growth of the community.

Note- While Alpine has very good service by deputies out of EC or on prowl duty, we believe it is big enough to have a substation.

For Personal  
**SERVICE**

Call

**N.M. GRIECO, Realtor**

463-6917

4616 TONI LAKE, SAN DIEGO 15

## Mary Carter Paints

Top  
Quality  
Paints



All  
Types  
Colors

**Every Second Gallon FREE!**

Mildred & Charles F. Peck, Owners

240 W. Main

El Cajon

444-2316



SEE EDITORIAL. PHOTO BY FRAN HALL

### SEWER FOR SCHOOL PRICE

Trustees Monday authorized Supt. Gilley to see about sale of bonds for sewer connection at the primary plant following advice from the health office to connect rather than revamp the septic system.

## Kip's Cafe

### FINE CHINESE FOOD

Delicious, Oriental, Exotic  
ORDERS TO GO. ALSO HOME DELIVERY  
Closed Monday - Free Parking  
1058 E Main, El Cajon, 442-1211

## MT. EMPIRE FEED

Of Alpine

2538 HWY 80 (FORMER VFW HALL) 445-2259

### HAY . FEED . SEED TACK

Insecticides - Serums - Vaccines  
Pet Food & Supplies Garden Supplies

#### SPECIAL TREE SALE

Lemon scented eucalyptus trees  
Yellow blossomed acacias, Brazil  
peppers plus flats of seedling  
garden vegetables.



#### ACE-HI DISTRIBUTOR

Courtesy Coffee for All Customers

Call 445-2259 For Free Delivery

Clayton W. Morrow, of La Jolla, has just purchased the C.R. McBride property on Hwy 80 above town, will improve the home, move here shortly, reports Mrs. Charlene Brown of Pierce Realty, Alpine.

Dr. Gertrude T. Ryder  
**OPTOMETRIST**  
175 N. MAGNOLIA  
El Cajon, California  
444-9012

**FRAN'S ALPINE  
GIFT SHOP**  
2249 Hwy 80 445-3106  
Candles - Ceramic & Plaster  
FIGURINES MADE TO ORDER  
Class in Beeswax Candle  
Crafting to be Announced

**Nutrition Center**  
Your Health Food Store  
162 E. Main El Cajon 442-7212  
Mr. & Mrs. H.A. Gillies  
Complete Line of Health Foods,  
Special Diet Foods — Vitamins,  
Minerals and Supplements  
Open Daily Except Sunday  
9:30 to 6:00, Friday to 8:00

WE GIVE GREEN STAMPS



## Sandy's Feed Store



Albers & Universal Feed

Hay - Feed - Seeds - Chick & Pet Supplies

**FREE DELIVERY**

Hours 8 a.m. to 6 p.m.

Ellen & Warren Sandy

444-7273

El Cajon

907 E. Washington

### MRS. MCCALL ENTERTAINS

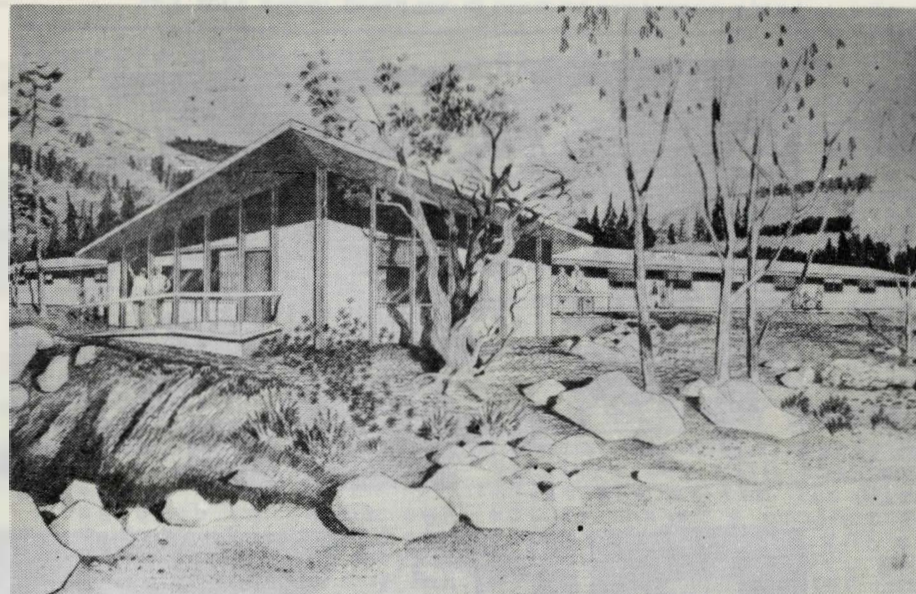
An interesting talk based on her recent trips to Europe was given by Mrs. Carl McCall of McCall's Ranch School. The topic was "Foreign Schools and Art" with highlights of her trip last summer where she visited museums and art centers. Her descriptions of Germany, Venice and Paris were enjoyed greatly. She said "European schooling is so different from ours and it is refreshing to visit class rooms where discipline is strictly enforced and courtesy to elders a prerequisite".

Hostess for the day was Mrs. Katherine Black assisted by Mrs. Jeanette Hinkle, Mrs. Laurence Michael, Mrs. Anthony Mudd. Program chairman was L.E. Peterson with Mrs. Ted Keller as publicity chairman.

### MRS. PALMER IN HOSPITAL

Nice recovery is being made from a major operation last Saturday by Mrs. Berniece Palmer, who, with her husband George, runs Glenview Feed Co. Palmer did not get to the fun show at their store till 4 pm, then it was all over, so he went home.

Sometimes it seems like the cost of making history is more than the darned stuff is worth.



THIS ATTRACTIVE 10,694 SQU. FT. ALPINE CONValescent CENTER BUILDING FOR 49 BEDS, NOW BEING BUILT AT 2120 HWY 80, DEPICTED IN ARCHITECT'S DRAWING, LOOKING NORTHEAST. (STORY IN SUN FOR MARCH 8.

WANT TO RENT IT? USE SUN CLASSIFIED.

### EXTRA YELLOW PAGES

If you need added copies of the Sun's Yellow pages, just buy a Sun at any local counter, or send 25¢ coin or stamps for three copies.

These sell the Sun: Bailey's Cafe, Empire and Florence's Markets, Fran's Gift Shop, Log Cabin Cafe, Outpost, Market and Rexall Pharmacy.

## Alpine ROCKET STATION Rocket Gasoline

Lutz Tiger Tread Tires

Most Major Brands Oil

Owned & Operated By

Walt Finch

2038 Hwy 80 445-9568

### Card of Thanks

We wish to thank the many friends for their  
We wish to thank the many friends for their  
thoughtfulness in the recent loss of our loved  
one.

-The Family of  
Ted Whitt



## Florence's Reopens

After hurdling the many legal procedures, Florence's Market was due to reopen today, having been closed since Wednesday last week when the owner, Mrs. Florence Clarke died suddenly.

Her daughter, Mrs. Ruth Harmer, here from Santa Rosa with husband Jerry, and Kenneth, Goudy, the son, also here with his wife from Yakima, have been attending to the legal aspects, will remain a short time before going home.

"We wish to thank our many friends for their sympathy during this trying period", they asked the Sun to convey. The store will operate as usual.

The Sun pays for good news photos.

## Blue Ribbon to Gruelle

The monthly exhibit of the SD Art Institute in Balboa Park gave Justin Gruelle, Lilac Lane, a first place in portraiture, an oil "Rebecca". With his wife he is making new silk screen subjects around scenic Alpine on orders from Alpine and SD shops which report a growing demand for these

## C OF C HOLDS BUSY SESSION

Wednesday night nearly 50 visitors met with chamber officials at the YC. Directors okayed a project to repaint welcome signs at both ends of Hwy 80, go after more and better bus service, attempt to get a vet hospital-- Alpine had one aftee WW1-- as US doctors said Alpine has best climate in US.

## Card of Thanks

To our many friends and customers in Alpine and the back country.

We wish to sincerely thank all for your wonderful expressions of sympathy during our recent bereavement.

The Family of

**Mrs. Florence Clarke**

# Alpine Yellow Pages Published by the Alpine Sun as a Public Service . . To Mar. 15, 63

All are 445 unless shown otherwise.

Adams Turk Ranch 555 Alp Hgts	2758
Alder's Fixit Shop 225 1/2 Hwy 80	2352
Alp Auto Supply 2530 Hwy 80	2409
Alp Butane Co.	444-3173
Alpine Cafe 2225 Hwy 80	
Alp C of C 2121 Hwy 80	2722
Alp Cir Tr Pk 2530 Hwy 80	2409
Alp Com Church W Vict	2110
Alp Conval Cent 2120 Hwy 80	2771
Alpine Cot Beauty 2864 E vict	2192
Alp Disp serv viejas view	3095
Alp Echo 521 Alp Hgts	2616
Alp Fibreglas Prod 2435 Hwy 80	2525
Alp Fire Station (Fires Only)	
1810 Hwy 80	2343
Custodian	2746
Fire Marshal	2301
Alp Habit Motel 2616 Hwy 80	3623
Alp HdW & Dept 2218 Hwy 80	2406
Alp Hgts MWD 555 Alp Hgts Rd	2758
Alp Motor Serv 2038 Hwy 80	9568
Alp Nursing Home 873 Arnold	3125
Alp Oaks Mobil Est 3505 Hwy 80	3081
Alp Postoffice 2165 Arnold	2151
Alp Realty 1911 Hwy 80	2000
Alp Rexall Pharm 2223 Hwy 80	2488
Alp Sales Yard 2940 Hwy 80	2984
Alp Sanitation Dist 4005 Rosicrans	
298-4181	
Nights & Holidays	238-3811
Alp School Hwy 80	2625 2626 2627
Alpine Primary Tavern Rd	2768
Alp Store 2204 Hwy 80	2153
Alp Sun 2255 Tavern Rd	2394 2415
Alp Truck Serv 2139 Hwy 80	2188 2414
Alp TV Serv 2357 Hwy 80	2253
Alp Villa Cottages 1539 Tavern	2453
Alp Village Art Alp Hgts Rd	2978
Alp Youth Cent 1800 Hwy 80	3777
Anderson the Cement Man	2588
Arbital, I O.D. 1330 W Vict	2345
<b>B</b>	
Bailey's Cafe 2139 Hwy 80	2414
Baptist Ch 3520 Hwy 80	3362 3705
Bates, Don Realty 2445 Hwy 80	2537
Big Oak Spgs Resort, Willows	3867
Blue Rock Serv 2151 Hwy 80	2132
Bob's Texaco Serv 2232 Hwy 80	2872
Bornowski Dr. Frank 1981 Arnold	2169
Bowlus Cottages 1460 Marshall	2790
Bredesen Dr. M	2321
Building Dept. EC	442-7711
Burdett Ruth 1460 Marshall	2877
Butler Drilling Co. Hwy 80	2587
<b>C</b>	
Campbell Egg Ranch Japatul	2053
Carlstrom Cottages 2250 Hwy 80	3092
Manager	3328
Casino Inn 1155 Hwy 80	9581
Clark's Chevron Stn 2224 Hwy 80	2963
Cliff's Automotive 15879 Hwy 80	3073
County Road Stn Tavern Rd.	2314
<b>D</b>	
Deer Hollow Egg Ranch Japatul	3618
Dinosaur Park 2320 Hwy 80	3351
<b>E</b>	
Empire Market Arnold Way	2105
<b>F</b>	
Fairview Tavern 16070 Hwy 80	3012
Florence's Market 2262 Hwy 80	2436
Forestry Stn Hwy 80	2411
Descanso Station	2211
Flinn Springs Stn	2170
Fran's Gift Shop 2249 Hwy 80	3106
Frontier Town 1723 Harb Canyon	
Fuller Hall 1346 Marshall	2110
<b>G</b>	
Gavin Bulldozing Hwy 80	3779
Gavin Inc Tax 9830 Gavin Rd	2812
George's Flying A 1925 Hwy 80	2443
Golden Arrow Dairy	296-6205
Greyhound Bus 225 1/2 Hwy 80	2352
<b>H</b>	
Hall Paint-Roof 2249 Hwy 80	3106
Harb Canyon School	3876
Health Dept. EC	442-3346
Hinkle J Realty 2105 Hwy 80	2502
Hinkle Lumber 2101 Hwy 80	2184
<b>I</b>	
Irvine Trlr Est 2255 Tavern Rd.	2415
Home	2394
<b>K</b>	
Kuhl Woodcraft 925 Hwy 80	3700
<b>L</b>	
Richard Lane Bldr Marshall Rd	3140
Landt, LH Appl 2353 Hwy 80	2361
Lengbridge TV & Radio	
9858 Hawley Rd	3885
Log Cabin Cafe 2205 Hwy 80	2243
Log Cabin Tr Park 2201 Hwy 80	2553
Loveland Dam Japatul Rd	3607
Lutz Garage Hwy 80 at Tav	2967
<b>M</b>	
Mac's Hauling & Rubbish	2955
Mallicoat Nurs Home 2733 Hwy 80	2771
McCall's Ranch Sch 2331 Tavern	2676
McCoy Realty 15949 Hwy 80	2655
McGuffies Sundries 2363 Hwy 80	2121
McKaskle Bldr 1228 Alp Hgts	3840
McKie Realty 2355 Hwy 80	2217
Melody Lane Motel 2617 Hwy 80	9580
Merrill Ptg 5429 Willows Rd	2693
Modern Septic Service	469-7055
Mt. Emp Feed 2538 Hwy 80	2259
Mt. Olive Rest Home 2690 S Gr	3177
<b>N</b>	
Norbob Trophy Co 445 Arnold	3123
<b>O</b>	
Outpost Mkt & Tr 4008 Hwy 80	

<b>P</b>	
Pac Tel 1261 W Victoria	444-3101
Palo Verde Ranch So Grade	2236
Pierce Realty 2277 Hwy 80	2631 3603
Pine Log Apts 2514 Hwy 80	2056
<b>Q</b>	
Queen of Angels Cath Church	
815 W Vict	2145
<b>R</b>	
Rio SD MWD 9739 Los Coches	443-3851
Rocket Service Stn 2042 Hwy 80	9568
Rushing, Fred Grading & Const	
3046 Hwy 80	2214
<b>S</b>	
SD County Civic Center	239-7711
SD Gas & Elec N Johnson	444-2161
Trouble	234-4123
Security Bank Arnold Way	2646
Shadyrock Picnic Ranch Marshall	3171
Shell Serv Stn 4007 Hwy 80	9561
Singing Hills Golf Club	442-2324
Smiley's Motel 3905 Hwy 80	2770
Smith Cottages Olivewood Lane	2548
Smith Realty 2721 Hwy 80	2670
Spear's Cottages 2115 Arnold	2432
Stockton Pump 311 N 2nd EC	444-2672
Sunnyknolls Rest Home Tavern Rd	2321
<b>T</b>	
Tappy's Motel 2337 Hwy 80	2954
<b>U</b>	
Union-Tribune 185 W Madison	442-3381
<b>V</b>	
Valley News 613 W Main	442-4404
Verlie's Beauty Shop Hwy 80	2131
<b>W</b>	
Wake Meat Proc 2358 Tavern	2752
Weeks Const Co	2226
Western Union 423 E Main	444-1151
Willow Glen Farm 521 Alp Hgts	2393
Willows Resort 4135 Willows	2237
Whitt Ted Plumber 2325 Eltinge	3665
Women's Club Vic & Hwy 80	2477
Woodall Earl MD 1330 W Vic	2345

## CHANGES & CORRECTIONS

### Sun Ads Pay Handsomely

## EMERGENCY CALLS

FIRE STATION, Alpine	2343
SHERIFF	232-3811
HIGHWAY PATROL	ZEI-2000
Emergency, call operator	
Routine Call	296-0118
DOCTOR	445-2345
Nights, Wed. & Sun	298-9311
AMBULANCE	442-3140
WELL & PUMP, Stockton	444-2672
EAST CO. CENTER	442-7711
WEATHER	297-4951
Dial-A-Prayer	222-6461

### POSTOFFICE HOURS

8:30 TO 5; SAT. 8:30 TO 12  
MAIL CLOSSES 5 PM DAILY EXCEPT  
SAT AT 2 PM. NONE ON SUNDAYS.  
MAIL ARRIVES 8 AM DAILY.

### LIBRARY HOURS

TUES. & THURS. 1 TO 5 PM.  
SATURDAY. . . 10 TO 2 PM.



Calvin Hill, radarman 3/c USN, son of Mrs. M.A. Muller, Alpine, is now aboard the USS Thomaston, of Pacific Amphibious Fleet, which observes its 21st birthday this month.

TOWNSFOLK TURNED OUT FOR WOMAN'S CLUB FISH DINNER. HERE IS RED ANDREWS, CASINO INN OWNER DINING WITH C.P. VANCIL, AND MRS. VANCIL, WHO WAS CHAIRMAN.

## MORE MUSIC

## LESS TALK

Tune in Sunbeams with Ed Ior Irvine, Sundays 7:30 p.m.

Radio 860  
Xemo

5000 watts of true HI-Fidelity music

295-6234

Park Manor Hotel, San Diego



With financing worries behind you, you'll enjoy that new car even more! If yours is not one of the many dealers who offer Security Bank financing, come talk to Security about an auto loan. With over 280 branches, there's sure to be one nearby. A new car is just one of the many good things possible when you make your financial partner SECURITY FIRST NATIONAL BANK

MEMBER FEDERAL DEPOSIT INSURANCE CORPORATION



When you've made a choice, ask him for this important extra: Security Bank financing.



Thinking about a new car? Now's a good time to see your dealer.

*so much is possible with Security Bank as your financial partner*

Corner of Main & Orange Streets, El Cajon

**BANK STORY** from page 1

vice-president.

Mallette is a native of Mason City, Ia. He attended South Pasadena-San Marino HS and Pasadena City College, is an active member, American Institute of Banking. In 1955 he came to Lakeside Branch as

## Ted Whitt PLUMBING

445-3665

Alpine

## Septic Tank

CLEANING

Call Hinkle Lumber

445-2184

MODERN SEPTIC SERVICE

## KARI JEWELERS

All Kinds of Watches & Clocks  
Expertly Repaired

Complicated Timepieces  
Including Electric Watches

DIAMOND SETTING &amp; ENGRAVING

All Work Guaranteed

444-7304

116 Prescott El Cajon

## Road Oiling

Fred D.

## RUSHING

GRADING &amp; EQUIPMENT RENTAL

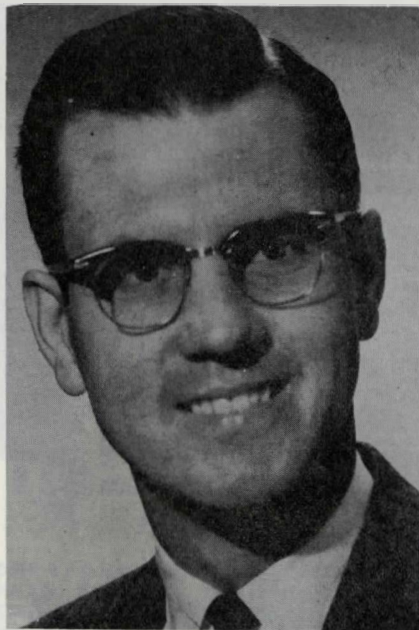
Backhoe work

Building Sites, Roads

Driveways, Trenching

445-2214

Alpine, Cal.



trainee, rose to assistant manager in 1960, later held several supervisory posts in branches at 40th & EC and South Bay.

On North Island he did military duty as Aviation Storekeeper for the Supply Corps, USN. He is a member of Lakeside Chamber of Commerce, Santee-Lakeside Rotary, and Dollars for Scholars.

With his wife Carol, a native of Chicago, he resides at 9411 Galston Dr., Santee, plans on moving here eventually.

Jack Hoistad and Phil Hall with their wives are back from a week-end drive to Yuma, Phoenix and Mexico.

Send the Sun to a friend abroad \$3.

Phomin's

## Income Tax Service

442-4151

243 N. Magnolia, El Cajon

## SOLIMINI PLANS SHINDIG

Monday night will see the 17th annual O'Solimine St. Patrick's Day Shindig down at famous Solimini's Italian Restaurant, 8949 LM Blvd. just off Ewy 80.

"Come and have a ball" invites George, mine host, "we'll have special NY corned beef on green cabbage, green decorations, Irish colleens, souvenirs and a lot of fun".

Many notables and Bohemians annually spend this evening with George, who for one night relinquishes his Italian, puts on an Irish personality.

## VETS SLATE FISH FRY

To benefit veterans of VFW, WW1 and Fleet Reserve, they are putting on a fish fry Sunday March 24 from 11 am, at Bert Fuller's, 4026 Hwy 80, opposite the Shell Station. "Donation is \$1 adults, 50¢ children" Bert says, "so come and eat all you can".

## TO TEACH CANDLE CRAFT

Fran Hall, of Fran's Gift Shop, 2249 Hwy 80, is readying a class in the unique and ancient art of candle crafting with beeswax. She is being kept busy on custom made candles a small industry she started recently here.

## Valley Trailer Supply



TOWING - REPAIRS

New &amp; Used Trailer Sales

Low Downs

1540 E. Main

El Cajon

442-0971

Jack Smith, 502 Arnold Way, has become a city inspector for Chula Vista, commutes daily to his work. He formerly ran a pump and well service here.

## Evelyn's BEAUTY SHOP

PERMANENTS FROM \$5.50 UP

Closed Tues  
2030 Crest Dr.,

444-4294  
Suncrest

## Ted Whitt PLUMBING

445-3665. Alpine

Jim, 445-3626 Al, 445-2920

1200 S &amp; H Green Stamps

WITH SYLVANIA

## PICTURE TUBE

This Offer Expires June 10

George Lengbridge

445-3885 Alpine



Kenneth Hittle, head of Butler Drilling Co., says business is excellent, that the coming of water has not slowed it up to any extent.

### INCOME TAX SERVICE

**Marie Gavin**

For Appointment Call  
445-2812

### JEANETTE C. HINKLE Real Estate & Insurance

Notary

445-2502 or 445-2285  
2101 Hwy 80 Alpine

### LEGAL NOTICE

NOTICE REGARDING GENERAL ELECTION ALPINE LOCAL FIRE DISTRICT ALPINE, CALIFORNIA.

NOTICE IS HEREBY GIVEN that a general election will not be held within the ALPINE LOCAL FIRE DISTRICT on Tuesday, April 2nd, 1963; that for the position of member of the Board of Fire Commissioners no nomination petitions were filed within the time required by law; that no petition was received from voters of this district asking that an election be held; and that the San Diego County Board of Supervisors will appoint a suitable person as member of the Board of Fire Commissioners of this District in accordance with Section 14060 of the Health and Safety Code.

BOARD OF FIRE COMMISSIONERS  
ALPINE LOCAL FIRE DISTRICT  
By Orville C. Palmer, Secretary  
Alpine Sun, Mar. 8, 15 & 22, 1963



**In Beautiful Pine Valley**  
Hobart House Lodge  
Hobart House Restaurant  
Riding, Hiking, Swimming, Tennis,  
Shuffleboard, Scenic Drives, Etc.  
Highway 80, 473-8711

## FLORENCE CLARKE

Sunday in Paris Mortuary at 7:30 pm the Rosary was recited for Mrs. Florence Clarke, 68, who died Wednesday in Grossmont Hospital (Sun for Mar. 8) Private entombment was Monday at Holy Cross Cemetery, Paris Mortuary being in charge.

She was a native of Idaho had lived in the county 29 years and was a member of the Women's Auxiliary, Associated Beverages Industry. She left in addition to survivors mentioned previously, five grandchildren and four great-grandchildren.

### EAST ON BUSINESS TRIP

Mrs. L.L. Adamkiewicz, owner of the new Mt. Olive Rest Home, 2690 South Grade Road, left Tuesday by car for Alpine, Texas and Philadelphia to attend to business. In the latter city she will join her husband, the doctor, who may return with her. B.F. Barber is in charge of the ranch.

Since moving Alpine Fibreglass from below town to the old fire station, 2435 Hwy 80, Mr. and Mrs. H.C. Alkire and son have taken the Gerdes place nearby to be nearer their work, which is growing daily.

Sandy Ferguson is out of the hospital and back home in the canyon, making fine recovery from surgery.

## Unbelievable Sale!

Tomorrow gates open at 7:30 am on something really unusual, a sensational sale a genuine cleanout-- of surplus items that accumulated in the store and warehouses of the Hall Co., formerly the W.D. Hall Co., 230 E. Main in EC.

In this issue is their ad listing many categories in various items from those used in the gay 90's down to most modern things--hard ware, wagon wheels, tools, trailers, heaters and "at least 5000 other items" they say.

This store has well served EC and the whole back country since it was founded by the early settler W.D. Hall, whose son Rexford, has run it in late years, with his brothers.

### 4-H PLANS BUSY PROGRAMS

Cindy Byers was named treasurer of Japatul 4H Club, in addition to her duties as publicist. She replaces Jane Reabold. Pam Weisbach is in charge of the guest book.

March 16 is county demonstrations at Poway. April 20 is a dress review. The annual box social was Saturday at the James Dyer ranch, Japatul Valley.

Elderly patient: "As we have known each other so long, doctor, I do not wish to insult you by paying my bill. I will leave you a handsome legacy in my will, instead."

Doctor: "That's very kind of you, I'm sure. By the way, let me have that prescription again. There's a slight change I want to make in it."

**M. H. Smith**  
PRESCRIPTION PHARMACY  
113 W. Main El Cajon Telephone 444-3135  
WE GIVE S & H GREEN STAMPS

## DON DIEGO CLOSED MONDAYS

Will Nielsen, owner of the popular Don Diego's Mexican food cafe, Johnstown, says they are closed Mondays, so they can have a day of rest. Business has been increasing steadily since he bought the place

## MALlicoat's NURSING HOME

### STATE LICENSED

Conscientious Service  
Balanced Meals  
Congenial Atmosphere

24-HOUR NURSING SERVICE

REASONABLE RATES

PO Box 397

Depending on Care Required  
2733 Hwy 80 445-2771

## Lutz's Garage

SERVING ALPINE & MT. EMPIRE

### Complete Motor Service

### 24-HOUR TOWING

Front End Alignment  
Wheel Balancing  
Automatic Transmission

HAROLD, GEORGE & LARRY

445-2967

Hwy 80 at Tavern Rd., Alpine

**Mexican FOOD**

CLOSED MONDAYS

## DON DIEGO'S

Orders to go.

443-2814

13675 Hwy 80 Johnstown

**WATKINS ON SICK LIST**

Due to being confined in bed for a fortnight, S.A. Watkins, former Alpine realtor, with new office at 13783 Hwy 80, may have to undergo surgery. His wife's brother, George Warren is holding down the desk.

**Water Wells PUMPS**

SALES . . . . . SERVICE

Water Wells Drilled

STOCKTON PUMP &amp; MACHINE

311 N 2nd, El Cajon, 444-2672

ESTABLISHED 1875

**PERCY H. GOODWIN COMPANY**

NOW OFFERS TO THE MOUNTAIN EMPIRE AREA THROUGH ITS EL CAJON OFFICE COMPLETE REAL ESTATE AND INSURANCE SERVICE. LISTINGS PROMPTLY CHECKED.

PERCY H. GOODWIN COMPANY  
490 NORTH MAGNOLIA AVE.  
442-8871 El Cajon

**First Church of Christ Scientist****LAKESIDE**

Los Coches Road

9:30 A.M. - SUNDAY SCHOOL  
11:00 A.M. - SUNDAY CHURCH  
WED. EVE. MEETING - 8 P.M.

READING ROOM

MONDAY THRU SATURDAY

12:30 TO 4:00 P.M.

9829 Maine Ave.

**Ted Whitt**

Services were Monday at 10 am in Paris Mortuary for Theodore Whitt, 32, of 2325 Eltinge Dr., who was instantly killed early Friday in an automobile collision while he was coming home on Los Coches Road, near Hwy 80. Interment was in Alpine Cemetery with Paris Mortuary in charge.

He was owner of Ted Whitt Plumbing here, was a native of SD. Like his father in WW1, he served in the USAF in 1948 and 49, was a member of Exchange Club in LM and the California Rodeo Ass'n, also sponsored Little League teams here for the past two seasons.

Surviving besides his widow, Roberta, are three children, Michele, Susan and Garson; his parents, Mr. and Mrs. Theodore B. Whitt, one brother, James B. Whitt, and one sister, Mrs. Margery Cooper, all of Alpine.

**Acacians Elect, Install**

At the March session of the Acacia Club, a Masonic family group, officers were elected and installed for 1963:

Ken Jerney, president; John R. Reynolds, vice-president; Mrs. Jeanette Smart, secretary, Mrs. Gladys Waldon, treasurer. New members accepted: Lt. Col. Chas. Dutton, (ret'd); Mr. and Mrs. Harry Colby, Mr. and Mrs. Joe Lyman.

Next meeting is Friday, April 12, in Fuller Hall following a potluck

**Classified**

30¢ PER LINE PER TIME. CASH ONLY.  
COUNT SIX WORDS TO EACH LINE. MAIL  
TO THE SUN, ALPINE, CALIF. CASH.

**FOR SALE, MISCELLANEOUS**

HORSE FOR SALE, GENTLE MARE, GOOD FOR YOUNGSTERS. 445-2415 OR 445-2394.

DEEP WELL PUMP, 3/4 HP, 180' SUCKER ROD. GEO. BUTCHER, 445-2109, ALPINE

55 BUICK HARDTOP CONV. POWER STEERING & BRAKES. 445-2798.

**WANTED, LAND**

PRIVATE PARTY WANTS ONE LEVEL ACRE, PAY CASH. 420-6455 OR WRITE 391 MONTCALM, CHULA VISTA, CALIF. (3-15)

**FOR RENT, HOUSES**

1 BR. FURN. ADULTS. 1352 SO. GRADE RD. ALPINE.

**FOR SALE REAL ESTATE**

2-BR & DEN ON 1-PLUS ACRE, LAKE-SIDE. PATIO, 2-CAR GAR & OUT-BUILDINGS, FENCED. TOTAL \$18,000 GOOD TERMS. GLENN D. MITCHELL 448-7211 OR 448-2521.

**NEW HOME CONSTRUCTION**

OVER 16,000 HARMONY HOMES IN SO. CALIF. APPROVED BY OVER 70 LENDING INSTITUTIONS. LET US SHOW YOU WHY. HO9-9187 OR ZENITH 7-0166. (TF) LEVELON BUILDERS, INC.

**BUSINESS OPPORTUNITIES**

SET YOUR OWN HOURS. HIGH EARNINGS FIRST YEAR. OPERATE PART OR FULL TIME. START WITH ABSOLUTE MINIMUM INVESTMENT. MEN OR WOMEN. AGE NO BARRIER. HUSBAND AND WIFE CAN WORK TOGETHER LEISURELY. DIGNIFIED WORK. EARLY RETIREMENT INCOME POSSIBLE. MARGO HUGHES 442-0163

BE A SUBSCRIBER, ONLY \$2 A YEAR!

**SPECIAL NOTICES**

RUTH BURDETT, PIANO LESSONS HI5-2877

LET MAC HAUL YOUR RUBEISH AND GARBAGE. 445-2955.

EXPERT CARPENTER, HOME BLDR. CABINET MAKER, ALTERATIONS, ADDITIONS, 30 YRS EXP. REAS. RATES. RICHARD C. LANE. 445-3740

ALPINE DISPOSAL SERVICE, GARBAGE & TRASH COLLECTION. 445-3095.

87 286 - 2 IH  
'SNIT700 DEN '9NIE0HSE99

INCOME TAX PREPARATION, PALOMAR BOOKKEEPING & TAX SERVICE. 2445 HWY 80, ALPINE. THURSDAYS ONLY. FOR APPT. CALL 445-2766.

PAINTING & ROOFING, 30 YEARS EXPERIENCE. TERMS. CALL JIM HALL. 445-3106, ALPINE. TF.

**MONEY TO LOAN**

SOUTHLAND FINANCE CORP., 411 BROADWAY, SD. 234-3461

**LISTINGS WANTED**

LISTINGS WANTED BY DON BATES, 2445 HWY 80. HI5-2537

SUN ADVERTISING PAYS OFF

**Cafe del Rey Morro**

One of America's  
Better Restaurants

12-8 pm Daily

Your Host  
Jerry Dicus

234-2161

Balboa Park,  
House of Hospitality, San Diego



ACCOMMODATIONS FOR  
LARGE AND SMALL  
PARTIES - MRS. BURDETT

**Milk****GOLDEN ARROW DAIRY**

"...ask your neighbor!"

for home delivery, call Bob Lightle  
474-2197 Independent Distributor --  
home office 296-6205.

WINNER OF 8 GOLD MEDALS AT THE STATE FAIR

**BLUE ROCK AUTO SERVICE**

WE GIVE S &amp; H GREEN STAMPS

2151 Hwy 80 Opp. Postoffice

445-2132

**Alpine's Fine Weather**

FROM OFFICIAL US STATION HERE

HIGH 69, AVE HIGH 62  
LOW 35, AVE LOW 39  
NO RAIN, SEASON 4.55

ELEV. 2000 FT. POPULATION 3258  
WHERE THE SUNSHINE SPENDS THE YEAR

**LEGAL NOTICE**

I WILL NOT BE RESPONSIBLE FOR DEBTS CONTRACTED BY GERE I. CAMPBELL OR SON AFTER MARCH 1, 1963. (MRS.) GLADYCE E. CAMPBELL ALPINE SUN, MAR 8-15 & 22, 1963

**TV Trouble?**

CALL YOUR RELIABLE  
**Sylvania Serviceman**

- You receive;  
\* Dependable Service  
\* Honest Prices  
\* Quality Parts

445-3885

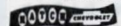
**GEORGE LENGBRIDGE**

**Let's Beautify Alpine!**

At long last this community has a nursery and with plenty of water here now, "Let's Beautify Alpine" is the slogan of Frank Green, at Mt. Empire Feed, 2538 Hwy 80. They have a good stock of small trees that are suited to this climate as lemon-scented eucalyptus, yellow blossomed acacias, brazil peppers and others, plus flats of seedling garden vegetables.

Note- Now's the time to plant, so we join Green in his slogan. If everyone put in trees in front of their places now, in a few years Alpine would look really green and beautiful. -CI

NOW IN PROGRESS AT



ANNUAL

**\$SMART MONEY WITH HATCH \$ELECTION!**

**\$SMART MONEY \$AVES MORE WITH HATCH \$ELECTION!**



CORVARS - CHEVY II'S - CHEVROLETS  
**TRUCKS TOO!**

LOW AS

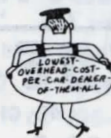
**\$295<sup>00</sup>**

TOTAL DOWN!

**\$48<sup>22</sup>**

MONTHLY

WITH ONE-THIRD DOWN OR EQUIVALENT TRADE.



1. OUR BIG \$ELECTION MEANS THE MODEL & EQUIPMENT YOU WANT IS WAITING FOR IMMEDIATE DELIVERY! NO WAITING- NO EXPENSE!!

2. WE HAVE A BIG \$ELECTION BECAUSE HISTORICALLY HATCH HAS BEEN A VOLUME DEALER (EVEN THO WE'RE IN A \$UBURBAN AREA) \$O WE GET MANY MORE CARS PER CAPITA THAN THE AVERAGE DEALER!



**850 EL CAJON BLVD.**

CITY OF EL CAJON TELEPHONE 492-0201  
(The Auto Capital of San Diego County)

OPEN EVENINGS- CLOSED SUNDAY (Because it is Sunday)